

Main Landing Gear Torque Links - Remove procedures

DMC: REGIONJETXAC1-CV1-CB2-10-02-0000-520A-D

Title: Main Landing Gear Torque Links - Remove procedures

Issue no: 003 new

Issue Date: 2005-02-24

Language: en/

Security classification : Class01

Responsible partner company: LBS/KA296

Originator: LBS/KA296

Applicability

QA: Unverified

Intentionally left blank

Main Landing Gear Torque Links - Remove procedures

Table of Contents		Page
References.....		1
Preliminary Requirements.....		2
Procedure.....		3

List of Tables		Page
1	References.....	1
2	Required Conditions.....	2
3	Required Persons.....	2
4	Support Equipment.....	2
5	Consumables, Materials, and Expendables.....	2
6	Spares.....	3
7	Required Conditions.....	17

List of Figures		Page
1	4
2	6
3	8
4	10
5	12
6	14
7	Main Landing Gear Strut Torque Links Removal.....	16

References

Table 1 References

Data Module/Technical Publication	Title
REGIONJETXAC1-CV1-C12-45-01-000-152A-D	Maintenance - Pre Maintenance
REGIONJETXAC1-CV1-C12-45-02-000-152A-D	Electrical - Pre Maintenance
REGIONJETXAC1-CV1-CB2-00-00-0000-012A-D	Landing gear - General - General warnings and cautions and related safety data
REGIONJETXAC1-CV1-CB2-40-03-0000-520A-D	Main Landing Gear Brakes - Remove procedures

Preliminary Requirements

Required Conditions

Table 2 Required Conditions

Title	Data Module
This task must be done in a hangar or a hardened aircraft shelter	
The aircraft must be safe for maintenance	REGIONJETXAC1-CV1-C12-45-01-000-152A-D REGIONJETXAC1-CV1-C12-45-02-000-152A-D
The aircraft must be electrically safe	REGIONJETXAC1-CV1-C12-45-01-000-152A-D REGIONJETXAC1-CV1-C12-45-02-000-152A-D

Required Persons

Table 3 Required Persons

Person	Category/Trade	Skill level	Trade code	Estimated time spent
Man a	TECHAFR	Basic		2.03h

Support Equipment

Table 4 Support Equipment

Nomenclature	Identification No.	Qty	Remarks
TORQUE WRENCH	NSN : 8928- 9-992-8298 Pt. 1 No : SP80030000 NSCM: PT405		
TOOL KIT	Pt. No : TK-494DF-1 NSCM: PT405	1	

Consumables, Materials, and Expendables

Table 5 Consumables, Materials, and Expendables

Nomenclature	Identification No.	Qty	Remarks
PIN COTTER	Pt. No : BACP10AD02C09P 1 NSCM: V5282		

Effectivity: All

REGIONJETXAC1-CV1-CB2-10-02-0000-520A-D

Nomenclature	Identification No.	Qty	Remarks
PIN COTTER	Pt. No : BACP20BC01D07P 1 NSCM: V5282		

Spares

Table 6 Spares

Nomenclature	Identification No.	Qty	Remarks
None			

Safety Conditions

WARNING

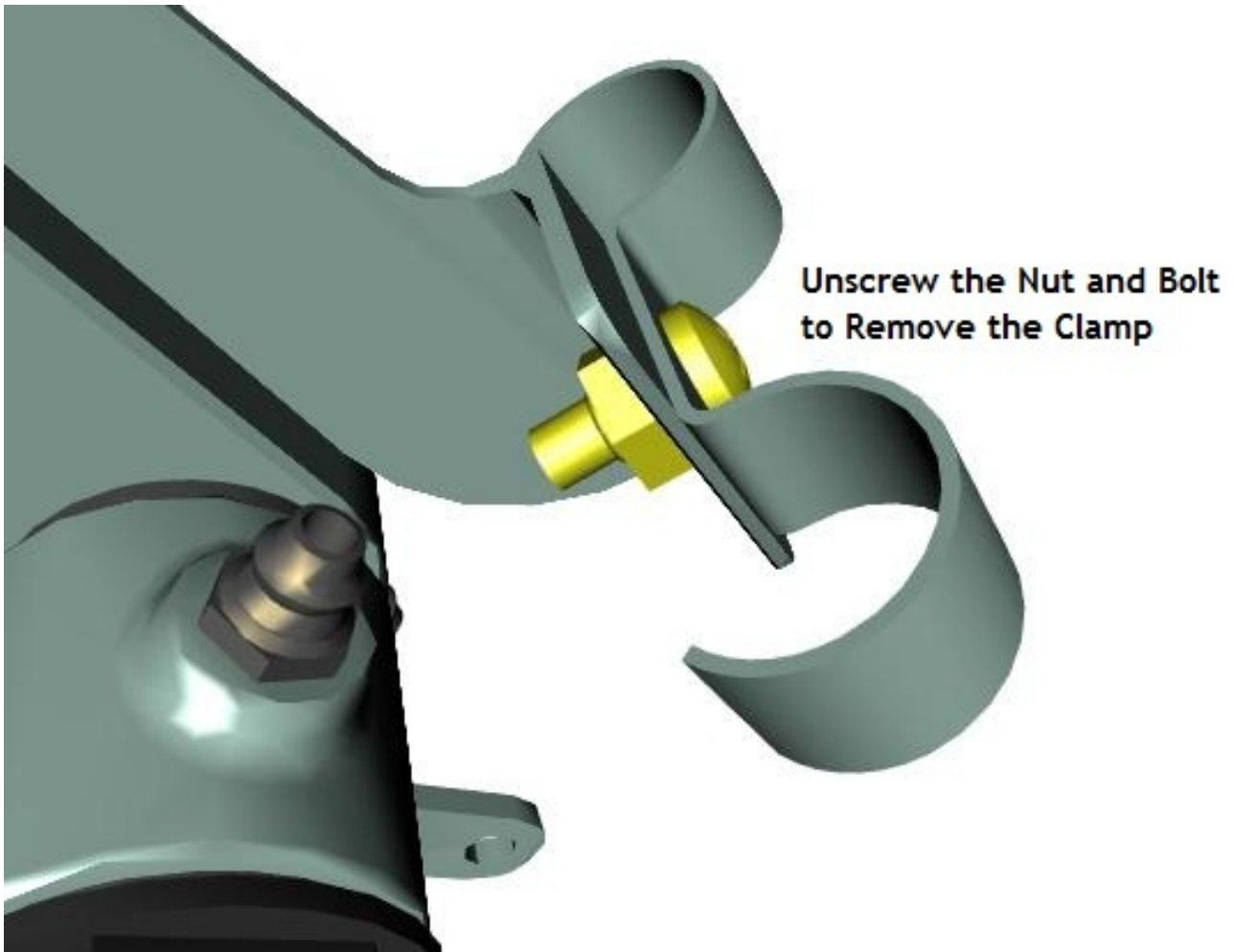
Review the SAFETY PRECAUTIONS section data before performing this procedure REGIONJETXAC1-CV1-CB2-00-00-0000-012A-D .

Procedure

Note

Procedures for the right and left components are the same. Only the procedures for the left are given.

- 1
- 2 Perform the Main Landing Gear Brakes - Remove procedures REGIONJETXAC1-CV1-CB2-40-03-0000-520A-D.
- 3 Remove the upper and lower torque link from the strut (Refer to Fig.7):
 - 3.1 Remove the screw (13), clamp (14) and nut (21) from the torque link standoff bracket (18).



JPG-CE67C49A82A64E57AFF89B91D287F6C7

Figure 1

-
- 3.2 Remove the cotter pins (16), nuts (15), washers (17), bolts (20), standoff bracket (18) and switch bracket (19) from the upper torque link (2).

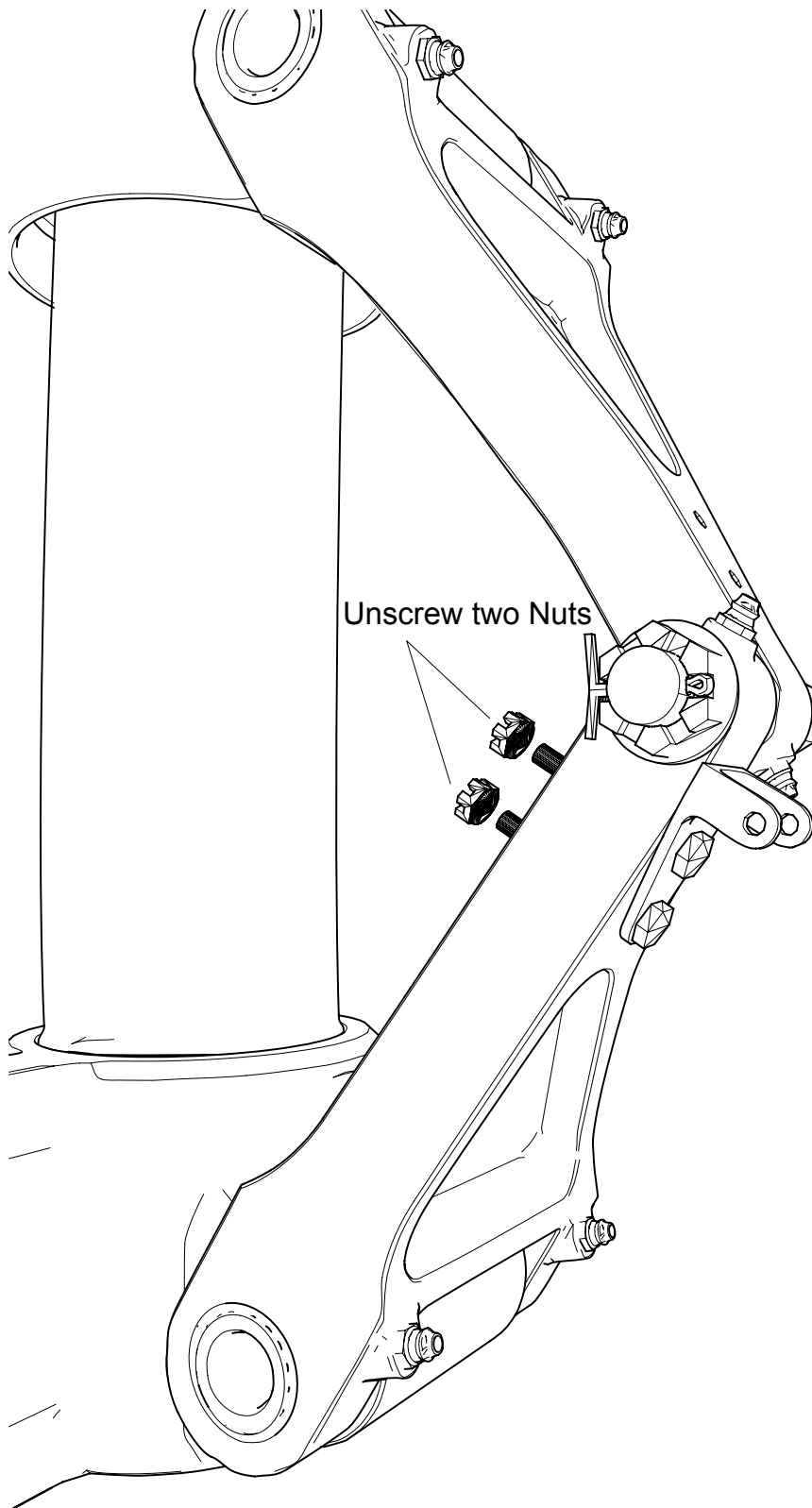
**Fold and remove the
Cotter Pins**



PNG-230367EAF1444CB8A58B7DD12E5A88EA

Figure 2

-
- 3.3 Remove the nuts (12), washers (11), bolts (8) and the switch terminal bracket (9) from the lower torque link (7).

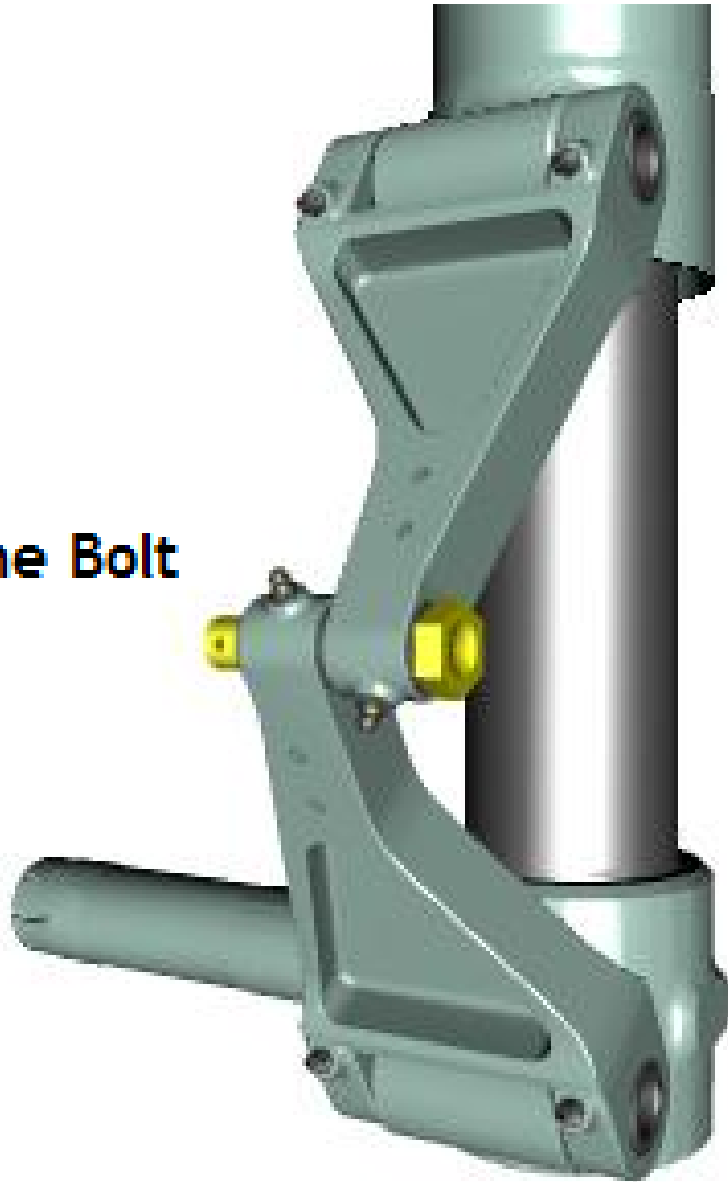


CGM-16670720B36F4E2E85836F17A6059E90

Figure 3

-
- 3.4 Remove the cotter pin (5), nut (4), washer (6) and bolt (10) from the torque links (2 and 7).

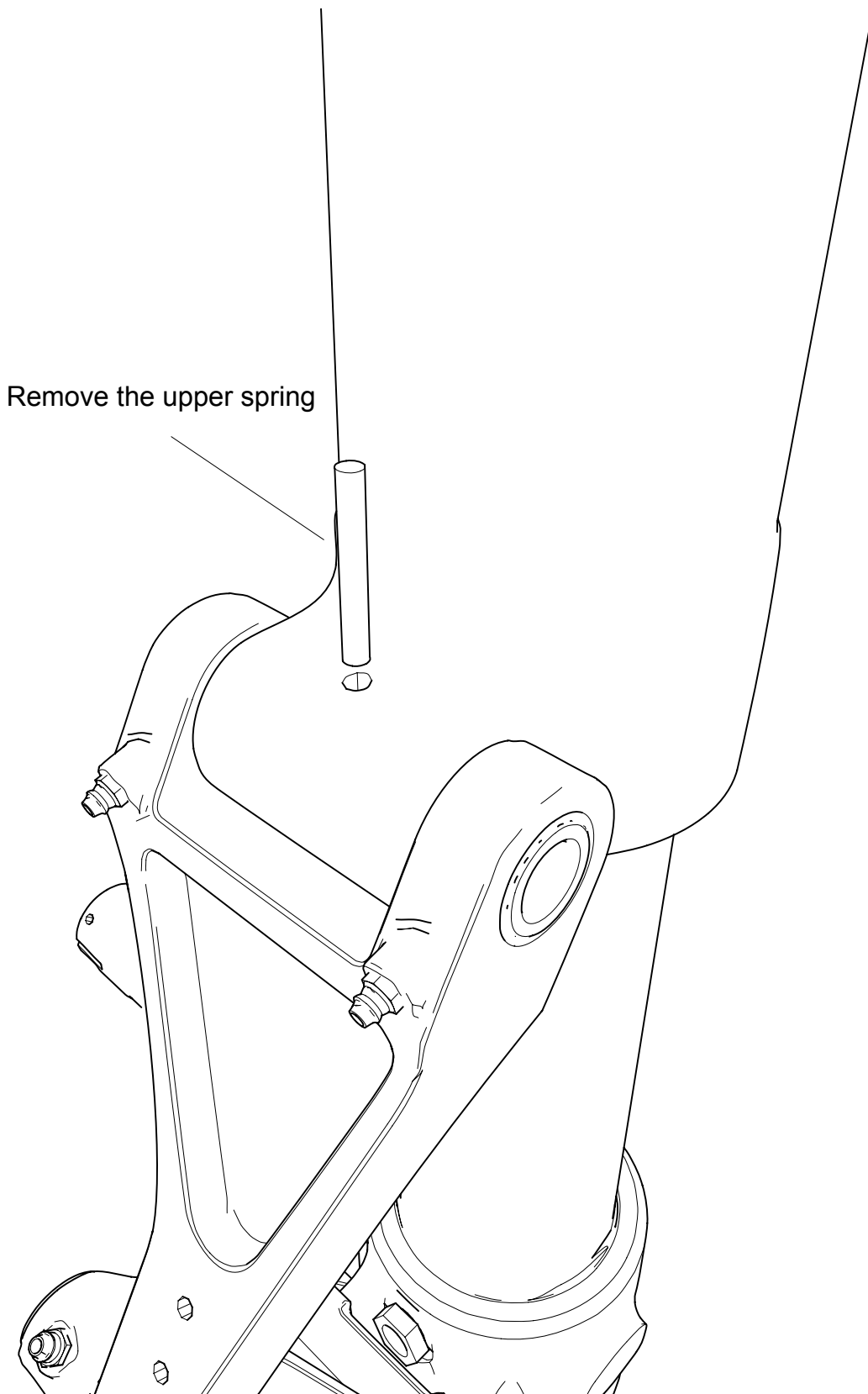
Remove the Bolt



PNG-A009E9211A9044BD948DABEE5165126C

Figure 4

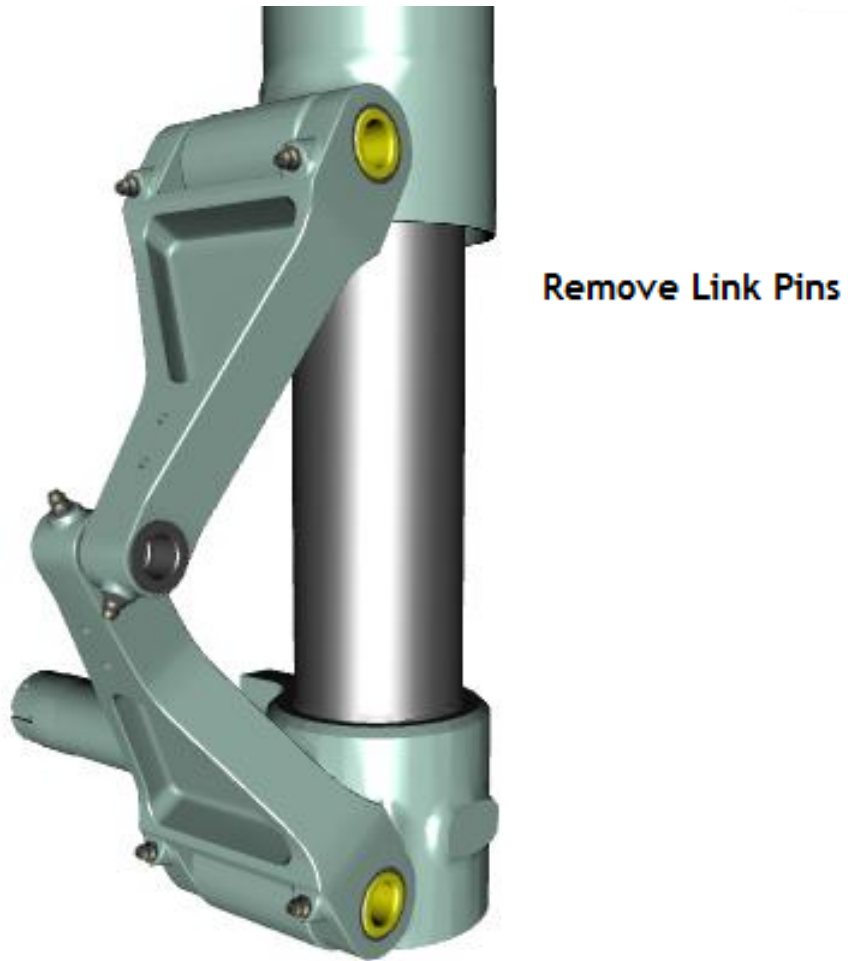
-
- 3.5 Remove the safety wires from the upper and lower slotted spring pins (3). Remove the spring pins (3).



CGM-790F57840634462595193277C7E33CD7

Figure 5

3.6 Remove link pins (1) from the upper (2) and lower (7) torque links.

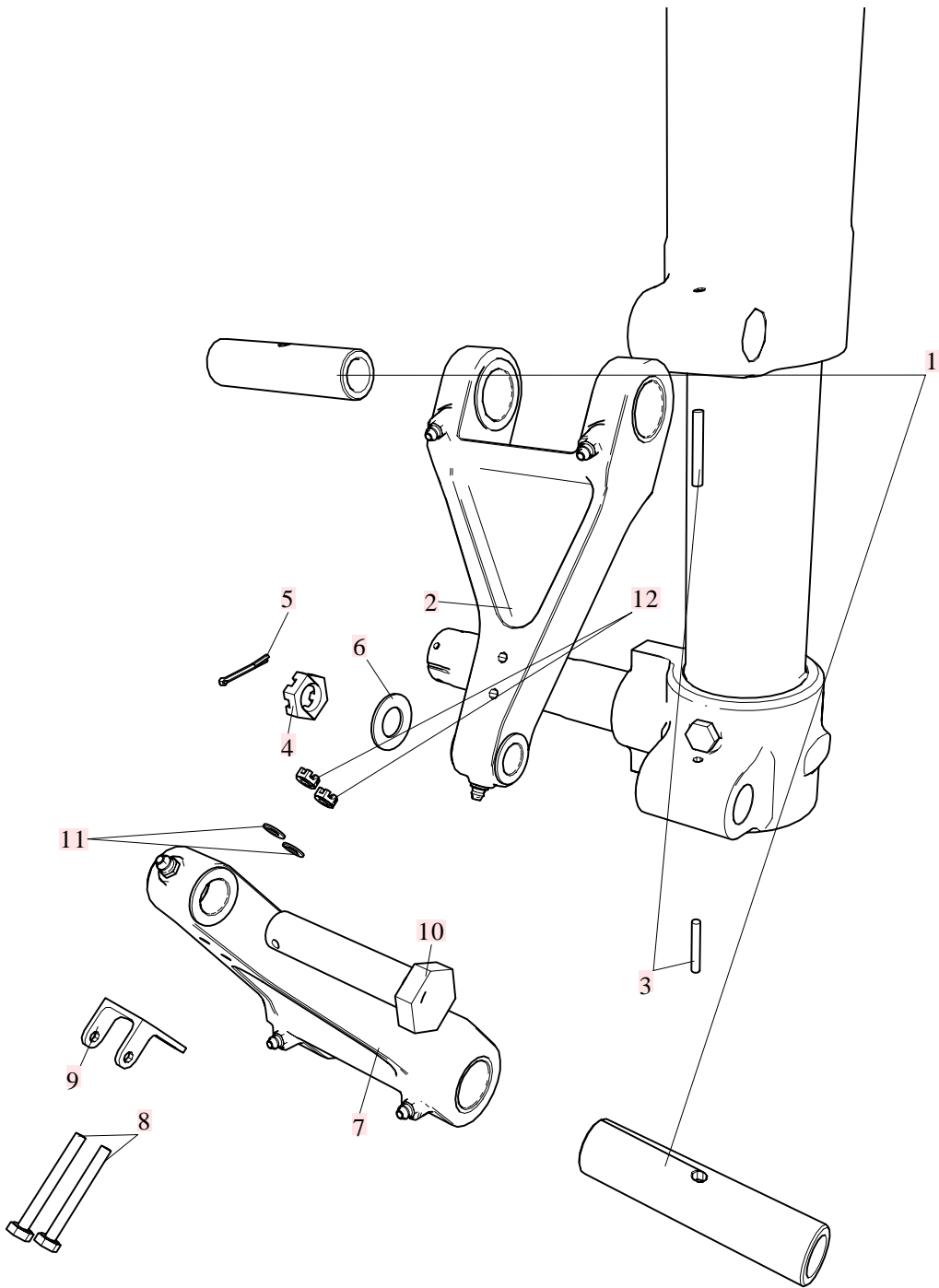


PNG-B273CA1C9032489E990BCC6D0C91E6AE

Figure 6

UNCLASSIFIED

-
- 3.7 Remove the upper torque link (2) and lower torque link (7) from the strut and axle.
 - 4 Inspect the strut, pins and torque link bushings for damage.



ICN-REGIONJETXAC1-CV1-CB21002-0-KA296-03-A-01-1

Figure 7 Main Landing Gear Strut Torque Links Removal

Requirements after job completion

Required Conditions

Table 7 Required Conditions

Title	Data Module
None	

Intentionally left blank